



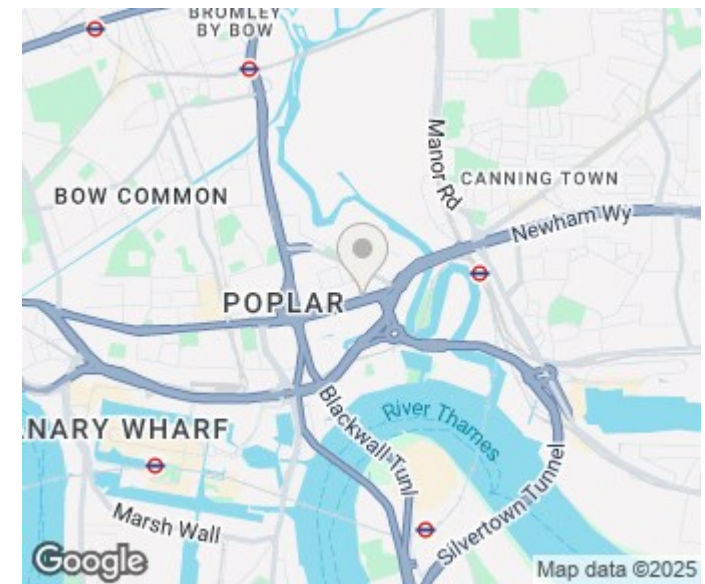
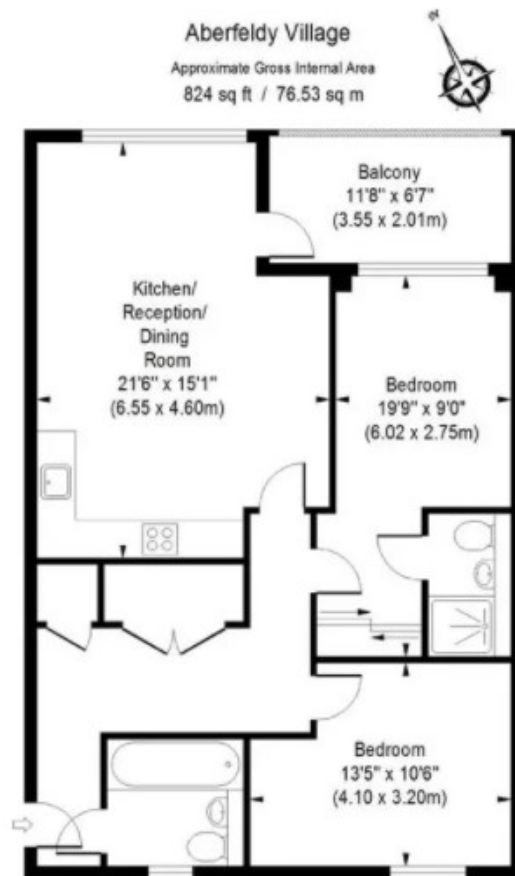
## 410 SAILORS HOUSE ABERFELDY VILLAGE, E14 0JT

**£2,500 PCM**

Now offered FURNISHED, this spacious 826sqft, two double bedroom, two bathroom modern apartment is situated in the heart of the extremely popular Oxbow/Aberfeldy Village development. Recently furnished by the landlord, the property consists of a large open plan kitchen and living space, two double bedrooms, with the master also having built in wardrobes and an en suite, a large family bathroom suite and its own private balcony space.

The wider development also has a 24 hour concierge service, residents' gym and a secure video entry system. There are excellent transport links close by including, 0.4 miles to Canning Town Station and 0.4 miles to East India DLR for easy access into Canary Wharf and Bank Station

**DouglasPryce**



Energy Efficiency Rating		
	Current	Potential
Very energy efficient - lower running costs		
(92 plus) <b>A</b>		
(81-91) <b>B</b>		
(69-80) <b>C</b>		
(55-68) <b>D</b>		
(39-54) <b>E</b>		
(21-38) <b>F</b>		
(1-20) <b>G</b>		
Not energy efficient - higher running costs		
<b>England &amp; Wales</b>	EU Directive 2002/91/EC	

Agents Note: Whilst every care has been taken to prepare these particulars, they are for guidance purposes only. All measurements are approximate and are for general guidance purposes only and whilst every care has been taken to ensure their accuracy, they should not be relied upon and potential buyers/tenants are advised to recheck the measurements

Lettings  
Verdant Lane  
London  
SE6 1LF

07887933642  
glenn@douglaspryce.co.uk  
www.douglaspryce.co.uk

**DouglasPryce**